



Dunloggin Middle School

Student/Parent
Orientation Presentation

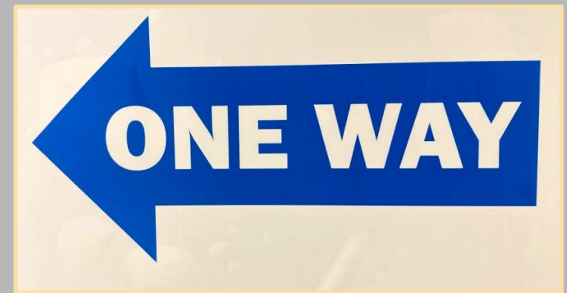
This is your guide to In-Person Learning!

**Everything you need to know to
be ready for school!**

- What to Expect on the 1st Day Video
- Entry and Dismissal Procedures
- Attendance
- Student Schedule
- “Grab ‘n Go” Breakfast
- Lunch Schedules
 - Lunch/Recess
 - Wednesday “Grab & Go” Lunch
- Health and Safety Guidelines
 - DMS is on FIRE!
 - Student Symptom Checker
 - Isolation Room
- What Do You Need?

What to Expect the 1st Day?

Let's take a closer look at the changes to our building.



Entry Procedures

- **Walkers**

- Walkers will arrive at 7:45 am.
- Early walkers will wait outside - 6 feet apart.
- Students cannot collect in the lobby.
- Students will report to period 1 starting at 7:45 am.

- **Buses**

- Buses will arrive starting at approximately 7:40 am, prior to student exiting the bus, attendance will be taken.
- All students are expected to sit in their assigned seat on the bus. (Seats will be assigned on the 1st day)

- **Car Riders**

- After all buses leave, parents will be allowed to come into the loop to drop off students.

Dismissal Procedures

- Announcements will start at 2:40, and students will pack up at this time.
- Buses riders will be dismissed first.
- Students will be dismissed by bus number starting around 2:42.
- Walkers/car riders will then be dismissed by grade level.
- Students can exit the building using any doors.

LUNCH

Lunch Shift	Time
A	11:00-11:30
B	11:35-12:05
C	12:10-12:40
D	12:45-1:15



- Students will enter the cafeteria WITH masks on.
- Lunch is “grab and go” and is free.
- Students take their masks off to eat.
- Students MUST remain seated.
- Masks should be put back on immediately after eating.
- There are 65 desks in the cafeteria with 6 feet of space surrounding each desk.
- There are 4 lunch shifts:
 - A - 11:00-11:30
 - B - 11:35-12:05
 - C - 12:10-12:40
 - D - 12:45-1:15

Students will be dismissed in groups of approximately 20 to allow for social distancing.

Lunch Shifts & Class Times



Lunch Shifts with Class Times

A Lunch		B Lunch		C Lunch		D Lunch	
11:00-11:30	Lunch	11:00-11:30	Class	11:00-12:05	Class	11:00-12:00	Class
11:40-12:40	Class	11:35-12:05	Lunch				
		12:15-12:45	Class	12:10-12:40	Lunch	12:00-12:40	*AW/SG/PO
12:40-1:15	*AW/SG/PO	12:45-1:15	* AW/SG/PO	12:45-1:15	*AW/SG/PO	12:45-1:15	Lunch

*Asynchronous Work (AW), Small Group (SG), and Pull Outs (PO)

Lunch Groups by Period 3

11:00-11:30AM	LUNCH GROUP A	AE Day Students	BE Day Students
RM 120	Benditt, Kathleen	3	7
RM 106	Blue, Daniel	11	8
RM 129	Brewer, Rachel	3	3
RM 126	Brigida, Alan	6	5
RM 108	Friend, Tiffany	4	4
RM 111	Goffaux, Kathleen	2	2
RM 103	Goforth, Starsha	5	9
RM 153	Guest, Stephen	14	10

11:35AM - 12:05PM	LUNCH GROUP B	AE Day Students	BE Day Students
RM 114	Han, Lois	7	6
RM 138	Henderson, Patricia	3	7
RM 116	James, Dylana	4	4
RM 122	Jones, Douglas	5	7
RM 105	Katkow, Andrea	3	4
RM 136	Mardock, Kirk	2	6
RM 110	Mcdonnell, Rhonda	6	8

12:10-12:40PM	LUNCH GROUP C	AE Day Students	BE Day Students
RM 125	Metz, Kristie	7	6
RM 118	Moraff, Molly	8	8
RM PORT 4	O'Connor, Shannon	3	10
RM 121	Pappalardo, Sarah	5	5
RM 112	Patterson, Christina	2	2
RM 119	Rabold, Courtney	3	2
RM PORT 5	Rajala, Brett	9	5
RM 115	Rogers, Carolyn	7	7

12:45-1:15PM	LUNCH GROUP D	AE Day Students	BE Day Students
RM 135	Satterfield, Lindsay	11	9
RM 107	Schelz, Emily	2	2
RM 109	Shamoo, Theresa	7	7
RM PORT 1	Sherrow, Heather	7	5
RM GYM	Stefan, Nancy	5	7
RM 101	Stralka, Joan	9	4
RM 104	Thomas, Susan	2	3

Recess

- Face masks are to be worn during indoor and outdoor recess
- Extra masks will be available for students
- Students will have the opportunity to wash their hands/use hand sanitizer immediately before, during and after recess
- Students will have access to hand sanitizer during outdoor recess
- Students should maintain social distancing of 6 feet or more during recess
- Students should not engage in contact activities
- Students can share equipment during recess

DAILY SCHEDULE

Monday Groups A & E in school Groups B & V virtual	Tuesday Groups A & E in school Groups B & V virtual	Wednesday Group E in school 8:00-10:30	Thursday Groups B & E in school Groups A & V virtual	Friday Groups B & E in school Groups A & V virtual
8:00-9:25 Period 1	8:00-9:25 Period 1	8:00-8:25 P1 E Supports	8:00-9:25 Period 1	8:00-9:25 Period 1
		8:30-8:55 P2 E Supports		
		9:00-9:25 P3 E Supports		
9:30-10:55 Period 2	9:30-10:55 Period 2	9:30-9:55 P4 E Supports	9:30-10:55 Period 2	9:30-10:55 Period 2
		10:00-10:30 FLEX/SEL		
		V Sync Support 10:35-11:05		
11:00-1:15 Period 3 w/duty free lunch	11:00-1:15 Period 3 w/duty free lunch	11:10-11:40 Duty Free Lunch	11:00-1:15 Period 3 w/duty free lunch	11:00-1:15 Period 3 w/duty free lunch
1:20-2:45 Period 4	1:20-2:45 Period 4	11:40-12:50 Teacher Prep	1:20-2:45 Period 4	1:20-2:45 Period 4

Hybrid Schedule

- While the class periods are about 85 minutes in length, students will be engaged in whole group instruction for about 50-60 minutes of the class period. The remaining 20-25 minutes will be focused on small group, supports, and/or independent work.

DMS is on FIRE!

How can you show your FIRE?

Focus...Integrity...Respect...Excellence

- Wear your mask
- Practice social distancing
- Wash your hand frequently
- Use hand sanitizer

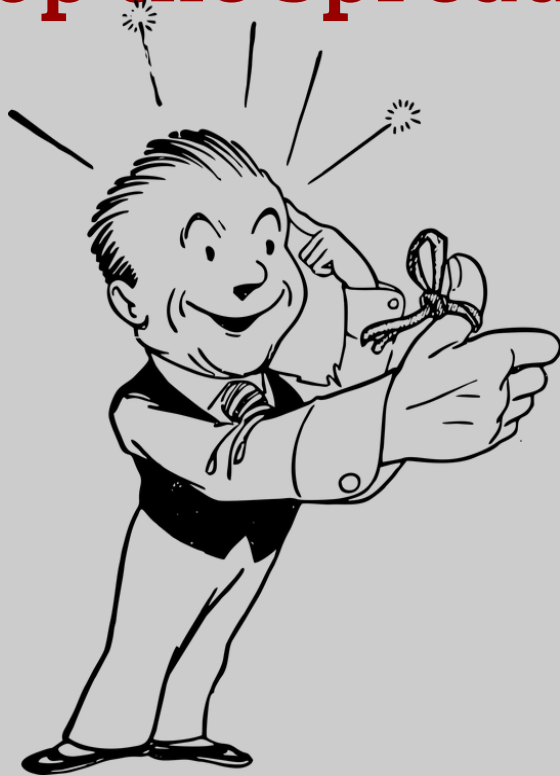


Behavior and Expectations

- Students are expected to comply with all CDC guidelines to ensure the health and well being of all students and staff.
- Students refusing to wear a mask or face shield (who do not have a medical excuse) will be spoken to by the teacher, and if refusal persists, will be referred to administration.
- Administration will contact the parents to pick up students. Further non-compliance can result in removal from in-person learning.



What Can You Do to Stop the Spread?



Stop the Spread of Germs



Do not enter if you are sick.



Wash your hands frequently.



You must wear a cloth face covering over your nose and mouth.



Do not touch your eyes, nose, or mouth.



Maintain social distancing of at least 6 feet.



Cover your cough or sneeze with a tissue, then throw the tissue in the trash and wash your hands.

Health and Safety

Prior to your child's departure from home, please remember to perform a symptom check daily. Students should not be sent to school if they are exhibiting any of the following symptoms...

- New onset cough, shortness of breath, or difficulty breathing
- New loss of taste or smell
- Fever over 100.4 or chills within the past 24 hours
- Fatigue
- Muscle or body aches; headache; sore throat
- Congestion or runny nose
- Nausea or vomiting; diarrhea



Attendance

- Students participating in the 2-Day hybrid program are expected to attend each day.
- Students absent from school can log-in virtually.
- Students not present for in-person or virtual instruction will be marked absent for the day.

Computers and Chargers



Chromebook Care

- Chromebooks should be fully charged when you arrive at school each day.
- Students should bring the device and power cord, headphones, as well as any external keyboard/mouse they may opt to use.



Also Bring:

- Backpack
- Power Cord
- Chromebook
- Water Bottle
- Headphones

Transitions Between Classes

- Students **MUST** follow the ONE WAY circle - even if the next class is super close.
- Staggered class dismissal by grade level **STARTS April 12th**
 - **Split grade-level classes will release with the dominant grade level in their class.**
 - Order of dismissal: 6th, 8th, 7th
 - Using time displayed on computer, Dismiss 6th graders (9:25, 10:55, 1:15) - bell will sound for six grade only.
 - 8th grade dismissed 2 minutes later (9:27, 10:57, 1:17)
 - 7th grade dismissed 2 minutes later (9:29, 10:59, 1:19)
- Students should enter the classroom immediately - don't wait in the hall.
- Wipes will be available for students to clean their desk if they'd like to when entering a class.





WHAT ABOUT LOCKERS?

NO LOCKERS!

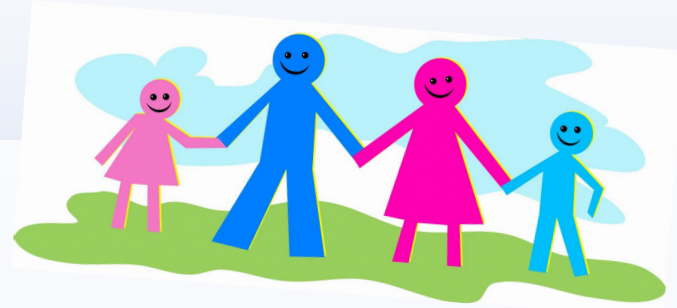
Students will carry jackets, backpacks, etc. with them throughout the day.



School Hours

Student Hours:
8:00 am - 2:45 pm

Parents



Our building is open but not open for visitors

- Conferences will remain virtual
- Students leaving early will be released from the front office
- IEP and 504 meeting will still be held virtually.

School Supplies

- Backpack
- Water Bottle
- Headphones
- Notebook with pens/pencils
- Hand Sanitizer
- Cleaning Wipes
- Computer
- Charging cord



Questions

- Please email school based administration or grade level counselors.
 - Principal: Antoinette_Roberson@hcpss.org
 - AP: Debra_O'Byrne@hcpss.org
 - Counselors: Ebony Peppers or Tiffany Madison
 - Ebony_Peppers@hcpss.org
 - Tiffany_Madison@hcpss.org